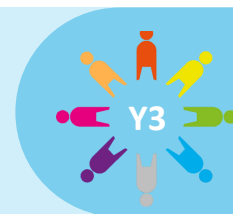


Know your Nutrients



How can our food choices keep our body and world healthy?



Project Questions

- What nutrients are found in food?
- How do nutrients benefit the human body? Give two examples.
- What are the sections of the eat well plate?
- What is the function of a plant's leaves?
- What is the function of a plant's stem and roots?
- What does a plant need to grow?

Visits and Visitors

Shopping trip to Aldi, Classroom Kitchen, Leeds Playhouse

Shakespeare 60

Taste bread from around the world, look after a pet

Golden Themes

Human rights:

- UN Convention on the Rights of the Child
- reasons why some people have their rights denied
- those responsible for rights being met (e.g. teachers, local and national government)

KEY DATES:

Friday 19th April- Shine a light on Eid, non-uniform day Wednesday 1st May- Parent Voice | Thursday 2nd May - Y3/4 Cricket competition | Friday 3rd May - Dance Spectacular at Headingley Stadium | Tuesday 14th May - Y3/4 Netball festival | Wednesday 15th May- Classroom kitchen (3OD) | Wednesday 22nd May- Classroom kitchen (3PD and 3F) | Friday 24th May- School closes at 3pm for 1 week holiday

ATTENDANCE



NEVER ABSENT

NEVER LATE

- ✓ Well done to all the children who had 100% attendance last half term! This is a brilliant achievement.
- ✓ Please continue to support us in helping your child reach their full potential by ensuring they attend school **every** day.
- ✓ Attendance has been impacted by sickness absence this half term.
- ✓ Whole school attendance so far this academic year is **96%**.
- ✓ Attendance in Year 3 last half term was **96.8%**. Well done!



To report an absence please contact us on the number below:

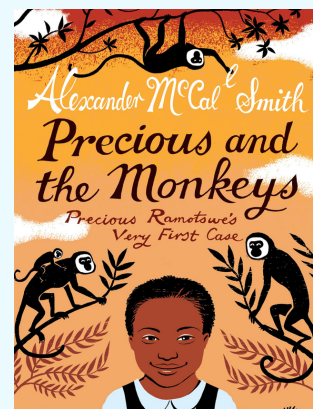


01135351000



office@shakespeareleeds.org.uk

WE ARE READING:



To read about the Year Three curriculum in more detail please visit our school website

**SHAKESPEARE
PRIMARY SCHOOL**

A curriculum of excellence
from the heart of Leeds

www.shakespeareleeds.org.uk

