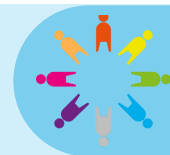
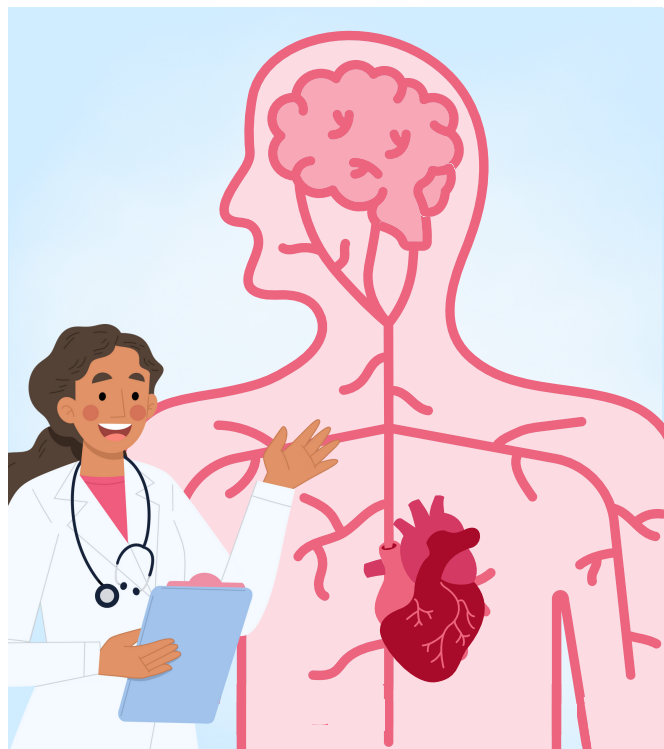


## The Human Heart



How do I maintain a healthy heart and what's the point?



### Project Questions

Can you explain the main parts of the human circulatory system and their functions? How does the heart work to pump blood throughout the body, and why is this function important? What are the different types of blood vessels, and how do they each play a role in the circulatory system? How does a healthy diet and regular exercise impact the way our bodies function, especially in terms of the circulatory system? Explain the importance of water and nutrient transport in our bodies. How does this process work?

### Visits and Visitors

Local surgeon visitor, local businesses support during British Heart Foundation fundraiser

### Shakespeare 60

Ride a bike on the road, take part in a debate, raise money for a charity

### Golden Themes

**Social Justice and Equity**- ways of defining and measuring poverty (relative and absolute) and inequality • inequalities within and between societies and how these change • wider causes and effects of poverty, inequality and exclusion

**Voice and Influence**

**Human Rights**

### KEY DATES:

- W/C Nov 13th Anti Bullying week  
• Nov 14th/15th Parent's Evening • Nov 17th Children in Need  
• Nov 22nd Parent Voice • Nov 27th and Dec 4th D:Side • Dec 21st Christmas party  
• Dec 21st Christmas dinner • Dec 22nd Christmas Jumper Day (Save the Children)

### ATTENDANCE

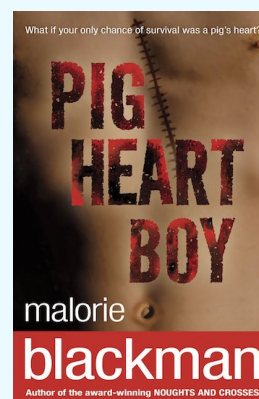


**NEVER ABSENT**

NEVER LATE

- 🕒 School starts at **8:45**
- ✅ It is illegal for your child to be absent from school without authorisation
- ✅ High attendance in school gets your child's life off to a flying start!
- ✅ To report an absence please contact us on the number below:  
☎ 01135351000  
✉ office@shakespeareleeds.org.uk

### WE ARE READING:



To read about the Year Six curriculum in more detail please visit our school website

**SHAKESPEARE  
PRIMARY SCHOOL**

A curriculum of excellence  
from the heart of Leeds

[www.shakespeareleeds.org.uk](http://www.shakespeareleeds.org.uk)

