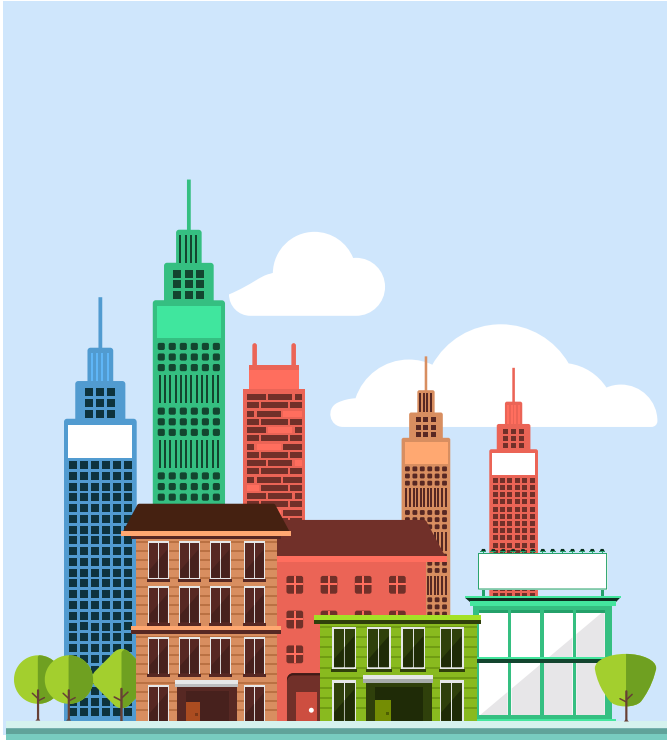


## City to City



### How are capital cities the same or different?



#### Project Questions

- What** is the capital city of each country in the UK?
- What** are the physical features of Leeds?
- What** are the human features of Leeds?
- How** does Leeds compare to Addis Ababa?

#### Visits and Visitors

Geography fieldwork: Walk around the local environment

#### Shakespeare 60

Support a charity and sing to an audience

#### Golden Themes

- Voice and Influence:** How to take part in making and changing rules in own class / school • Uneven sharing of power and how some people are excluded from decision- making
- Human Rights:** The need to respect the rights of others

### KEY DATES:

Friday 6th September- Meet the Teacher

- Tuesday 17th September- Parent phonics meeting
- Wednesday 18th September- Parent Voice

### ATTENDANCE



**NEVER ABSENT**

NEVER LATE

- 🕒 School starts at **8:45**
- ✅ It is illegal for your child to be absent from school without authorisation
- ✅ High attendance in school gets your child's life off to a flying start!
- ✅ To report an absence please contact us on the number below:  
☎ 01135351000  
✉ [office@shakespeareleeds.org.uk](mailto:office@shakespeareleeds.org.uk)

### WE ARE READING:



To read about the Year One curriculum in more detail please visit our school website

**SHAKESPEARE  
PRIMARY SCHOOL**

A curriculum of excellence  
from the heart of Leeds

[www.shakespeareleeds.org.uk](http://www.shakespeareleeds.org.uk)

