

## Ancient Egypt



### What are the Ancient Egyptians famous for?



#### Project Questions

What does BC and AD mean?  
How do we learn about the past?  
Why was Howard Carter's discovery so important?  
What was mummification?  
What was the role of a pharaoh?  
What did the pyramids represent?

#### Visits and Visitors

See a real-life mummy at Leeds City Museum  
Prime VR experience

#### Shakespeare 60

Visit a museum, have a piece of artwork framed

#### Golden Themes

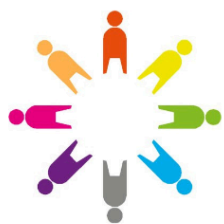
Peace and Conflict:

- some causes and effects of conflict at all levels
- strategies for managing, resolving and preventing conflict, including 'win-win' solutions
- examples of conflicts past and present in own society and others

### KEY DATES:

- Wednesday 22nd January- 9am Parent Voice • Wednesday 22nd January - Prime VR experience
- Tuesday 28th January- 3F visit to Leeds Museum • Friday 7th February- 3D and 3M visit to Leeds Museum
- Friday 14th February- School is **closed** for a training day and holidays, it will open again on Monday 24th February

### ATTENDANCE



**NEVER ABSENT**  
NEVER LATE

To report an absence please contact us on the number below:

01135351000

office@shakespeareleeds.org.uk

- ✓ Well done to all the children who had 100% attendance last half term! This is a brilliant achievement.
- ✓ Please continue to support us in helping your child reach their full potential by ensuring they attend school **every** day.
- ✓ We will be monitoring attendance closely over the next half term. Please contact us if you need support.
- ✓ Whole school attendance so far this academic year is 96%. During last half term alone, attendance was 96.2%
- ✓ Attendance in Year 3 last half term was **95.8%**. This is below the rest of the school. Please ensure your child attends school every day this half term.

### WE ARE READING:



To read about the Year Three curriculum in more detail please visit our school website

**SHAKESPEARE  
PRIMARY SCHOOL**

A curriculum of excellence  
from the heart of Leeds

[www.shakespeareleeds.org.uk](http://www.shakespeareleeds.org.uk)

