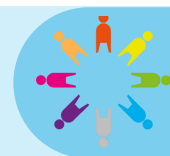


## Earth and Space



### What connects the Earth, Moon and Stars?



#### Project Questions

How does the Earth move, in relation to the sun?  
How does the moon move, in relation to the Earth?  
How can I describe the sun, Earth and moon?  
How do we have day and night?

#### Visits and Visitors

Planetarium visit  
Visit Trinity Academy for a STEM day

#### Shakespeare 60

Learn ukulele, learn chess, take part in a play

#### Golden Themes

Peace and Conflict:

- wider causes and effects of conflict at all levels
- importance of resolving conflict fairly
- role of non-violent protest in social and political change

### KEY DATES:

- Wednesday 8th January- Planetarium visit Y5 • Wednesday 22nd January- 9am Parent Voice
- Monday 20th January- Artist Kevin Hickson visits • Friday 24th January- Artist Kevin Hickson visits
  - Friday 7th February- Artist Kevin Hickson visits • Tuesday 11th February- Y5/6 Excel Choir day
  - Friday 14th February- School is **closed** for a training day and holidays, it will open again on Monday 24th February

### ATTENDANCE



**NEVER ABSENT**  
**NEVER LATE**

- ✓ Well done to all the children who had 100% attendance last half term! This is a brilliant achievement.
- ✓ Please continue to support us in helping your child reach their full potential by ensuring they attend school **every** day.
- ✓ We will be monitoring attendance closely over the next half term. Please contact us if you need support.
- ✓ Whole school attendance so far this academic year is 96%. During last half term alone, attendance was 96.2%
- ✓ Attendance in Year 5 last half term was **96.1%**. This is lower the rest of the school. Please ensure your child comes to school every day this half term.

✓ To report an absence please contact us on the number below:  
☎ 01135351000  
✉ [office@shakespeareleeds.org.uk](mailto:office@shakespeareleeds.org.uk)

### WE ARE READING:



To read about the Year Five curriculum in more detail please visit our school website

**SHAKESPEARE  
PRIMARY SCHOOL**

A curriculum of excellence  
from the heart of Leeds

[www.shakespeareleeds.org.uk](http://www.shakespeareleeds.org.uk)

