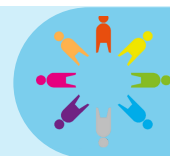
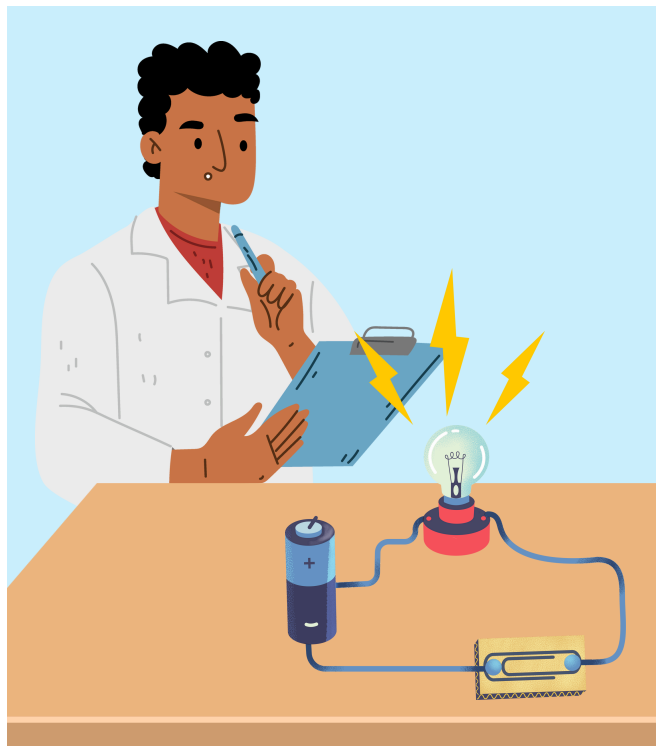


Changing Circuits



How can changing one component effect a circuit?



Project Questions

How do scientists draw circuits?
How can a circuit be changed?
Why is a lamp brighter in a circuit with two batteries than with one?
How will increasing the voltage in a circuit affect the components?

Visits and Visitors

Visit to Leeds Art Gallery

Shakespeare 60

Visit an art gallery

Golden Themes

Peace and Conflict:

- wider causes and effects of conflict at all levels
- importance of resolving conflict fairly
- role of non-violent protest in social and political change

KEY DATES:

Tuesday 21st January- Y6 visit to Leeds Art Gallery • Wednesday 22nd January- 9am Parent Voice

• Tuesday 11th February- Y5/6 Excel Choir day • Friday 14th February- School is **closed** for a training day and holidays, it will open again on Monday 24th February

ATTENDANCE



NEVER ABSENT
NEVER LATE

✓ Well done to all the children who had 100% attendance last half term! This is a brilliant achievement.

✓ Please continue to support us in helping your child reach their full potential by ensuring they attend school **every** day.

✓ We will be monitoring attendance closely over the next half term. Please contact us if you need support.

✓ Whole school attendance so far this academic year is 96%. During last half term alone, attendance was 96.2%

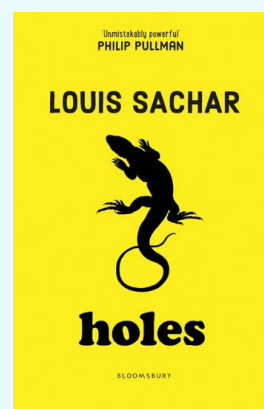
✓ Attendance in Year 6 last half term was **95.9%**. This is below the rest of the school. Please ensure your child attends school every day this half term.

✓ To report an absence please contact us on the number below:

☎ 01135351000

✉ office@shakespeareleeds.org.uk

WE ARE READING:



To read about the Year Six curriculum in more detail please visit our school website

**SHAKESPEARE
PRIMARY SCHOOL**

A curriculum of excellence
from the heart of Leeds

www.shakespeareleeds.org.uk

