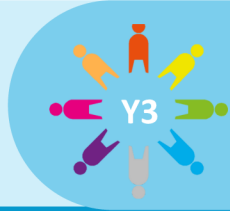


Know your Nutrients



How can our food choices keep our body and world healthy?



Project Questions

- What nutrients are found in food?
- How do nutrients benefit the human body? Give two examples.
- What are the sections of the eat well plate?
- What is the function of a plant's leaves?
- What is the function of a plant's stem and roots?
- What does a plant need to grow?

Visits and Visitors

Shopping trip to Aldi, Leeds Playhouse

Shakespeare 60

Taste bread from around the world, look after a pet

Golden Themes

Human rights:

- UN Convention on the Rights of the Child
- reasons why some people have their rights denied
- those responsible for rights being met (e.g. teachers, local and national government)

KEY DATES:

29th April and 1st May- Parent's Evening

Wednesday 7th May- Parent Voice | Wednesday 7th May- Gurdwara visit

ATTENDANCE



NEVER ABSENT
NEVER LATE

- ✓ Well done to all the children who had 100% attendance last half term! This is a brilliant achievement.
- ✓ Please continue to support us in helping your child reach their full potential by ensuring they attend school **every** day.
- ✓ Attendance has been impacted by sickness absence this half term.
- ✓ Whole school attendance so far this academic year is **96%**.
- ✓ Attendance in Year 3 last half term was **96.8%**. Well done!



To report an absence please contact us on the number below:

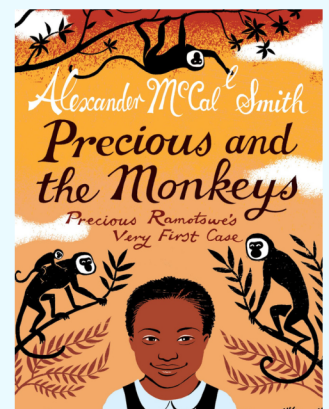


01135351000



office@shakespeareleeds.org.uk

WE ARE READING:



To read about the Year Three curriculum in more detail please visit our school website

**SHAKESPEARE
PRIMARY SCHOOL**

A curriculum of excellence
from the heart of Leeds

www.shakespeareleeds.org.uk

