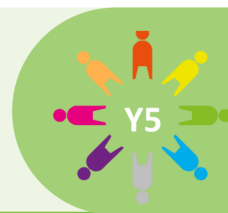
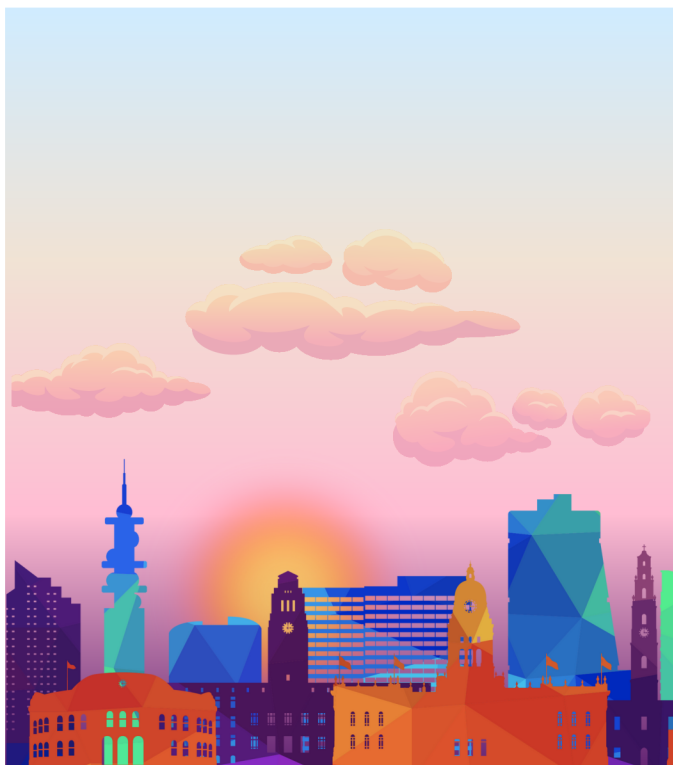


ID: Leeds



Who am I and how is Leeds a part of me?



Project Questions

- Can you name 3 cities and their counties in the UK?
- Can you name at least 3 different types of land use?
- What is the topography of land in Leeds?
- How is land used in Leeds?
- How has land use in Leeds changed over time?

Visits and Visitors

Fieldwork trip around Burmantofts to observe map land use, Polly Ho-Yen visit, Paul Digby artist workshop, Visit to Carers Leeds

Shakespeare 60

Learn to play chess, learn the ukulele, meet an author

Golden Themes

Human rights:

- Universal Declaration of Human Rights • Importance of citizens, societies and governments respecting and defending people's human rights • Current and historical human rights issues and movements in own country and elsewhere

KEY DATES:

29th April and 1st May- Parent's Evening
Wednesday 7th May- Parent Voice

ATTENDANCE



NEVER ABSENT
NEVER LATE

- ✓ Well done to all the children who had 100% attendance last half term! This is a brilliant achievement.
- ✓ Please continue to support us in helping your child reach their full potential by ensuring they attend school **every** day.
- ✓ Attendance has been impacted by sickness absence this half term.
- ✓ Whole school attendance so far this academic year is **96%**.
- ✓ Attendance in Year 5 last half term was **96.8%**. Well done!



To report an absence please contact us on the number below:

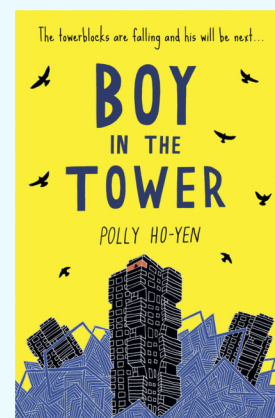


01135351000



office@shakespeareleeds.org.uk

WE ARE READING:



To read about the Year Five curriculum in more detail please visit our school website

**SHAKESPEARE
PRIMARY SCHOOL**

A curriculum of excellence
from the heart of Leeds

www.shakespeareleeds.org.uk

