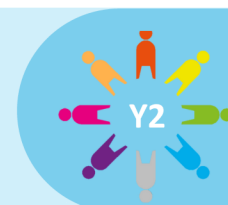
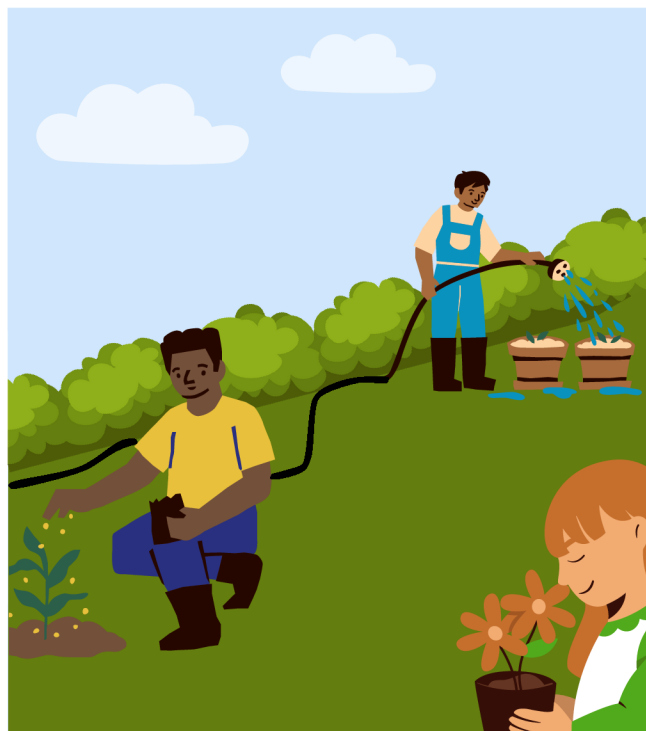


## The Apprentice Gardeners



### What does a plant need to grow and mature?



#### Project Questions

- What do plants need to be healthy? Name three things.
- What does a healthy plant look like?
- What does an unhealthy plant look like?
- Do all plants need the same temperature to be healthy?
- Do seeds need light to germinate? Why/why not?

#### Visits and Visitors

Tropical World visit, seaside visit to Filey

#### Shakespeare 60

Paddle in the sea, dig a hole in the sand

#### Golden Themes

**Sustainable development:** • positive and negative impacts of people's actions (including own personal choices) on others and the environment • how people can damage or improve the environment

### KEY DATES:

Thursday 5<sup>th</sup> June- Class Photos | Thursday 12<sup>th</sup> June- Y2 Skipping Festival |  
W/C Monday 16<sup>th</sup> June- Tropical World | Wednesday 18<sup>th</sup> June- Parent Voice | Friday 27<sup>th</sup> June- Science Festival Day |  
Tuesday 8<sup>th</sup> July- Sports Day (PM) | Thursday 10<sup>th</sup> July- Filey visit

Friday 18<sup>th</sup> July- School closes at 2pm for the summer holidays, we look forward to welcoming you back at 8.45am on Tuesday 2<sup>nd</sup> September 2025.

### ATTENDANCE



**NEVER ABSENT  
NEVER LATE**

☑ To report an absence please  
contact us on the number below:  
☎ 01135351000  
✉ [office@shakespeareleeds.org.uk](mailto:office@shakespeareleeds.org.uk)

- ✓ Well done to all the children who had 100% attendance last half term! This is a brilliant achievement.
- ✓ Please continue to support us in helping your child reach their full potential by ensuring they attend school **every** day.
- ✓ Attendance has been impacted by sickness absence this half term.
- ✓ Whole school attendance so far this academic year is **96%**.
- ✓ Attendance in Year 2 last half term was **97%**. Please let us know if you would like support with your child's attendance.

### WE ARE READING:



To read about the Year Two curriculum in more detail please visit our school website

**SHAKESPEARE  
PRIMARY SCHOOL**

A curriculum of excellence  
from the heart of Leeds

[www.shakespeareleeds.org.uk](http://www.shakespeareleeds.org.uk)

