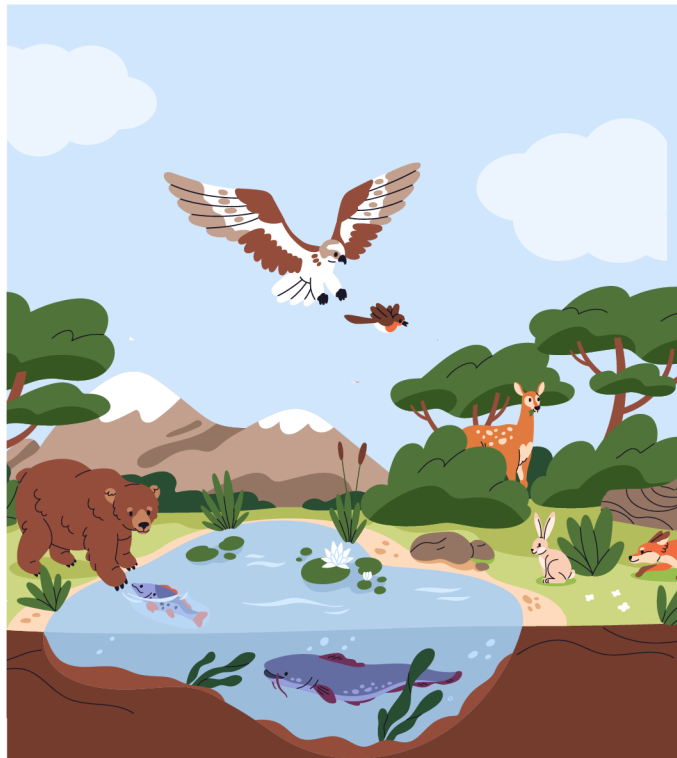


Our Changing World



What is a food chain and where does it start?



Project Questions

How do we know if something is dead, alive or never been alive?

What might you find in a habitat?

How do habitats change over time?

Who eats who, in the animal world?

Visits and Visitors

Lion Learners

Shakespeare 60

Care for a plant and support a charity

Golden Themes

Voice and Influence: How to take part in making and changing rules in own class / school • Uneven sharing of power and how some people are excluded from decision- making

Human Rights: The need to respect the rights of others • How people can damage or improve the environment

Weekly PE days: 2MB Monday and Tuesday | 2LB Monday and Thursday | 2K Wednesday and Friday

KEY DATES: Y2 Meet the Teacher 4th September 8:50am | Lion Learners in

school 10th September | Parent Voice Wednesday 17th September | School closed for a training day 6th

October | Harvest Festival Monday 13th October | Shine a Light day 17th October

ATTENDANCE

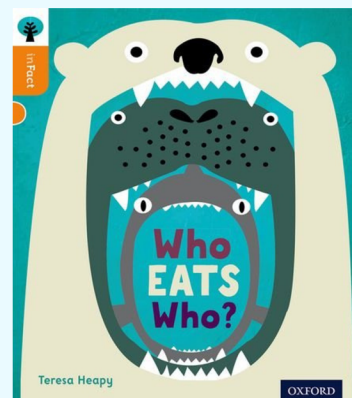


NEVER ABSENT

NEVER LATE

- ⌚ School starts at **8:45**
- ✓ It is illegal for your child to be absent from school without authorisation
- ✓ High attendance in school gets your child's life off to a flying start!
- ✓ To report an absence please contact us on the number below:
☎ 01135351000
✉ office@shakespeareleeds.org.uk

WE ARE READING:



To read about the Year 2 curriculum in more detail please visit our school website

**SHAKESPEARE
PRIMARY SCHOOL**

A curriculum of excellence
from the heart of Leeds

www.shakespeareleeds.org.uk

