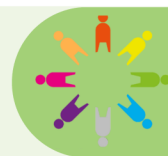
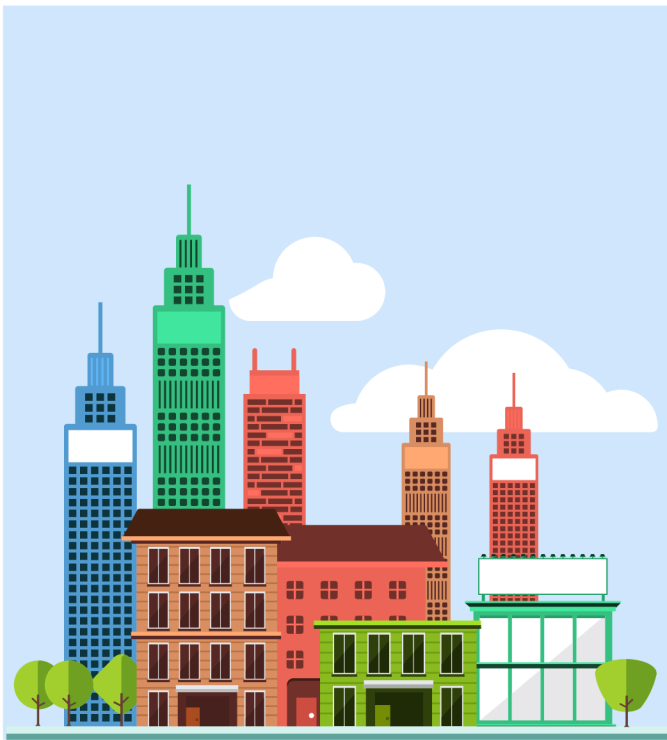


City to City



How are capital cities the same or different?



Project Questions

What is the capital city of each country in the UK?
What are the physical features of Leeds?
What are the human features of Leeds?
How does Leeds compare to Addis Ababa?

Visits and Visitors

Geography fieldwork: Walk around the local environment

Shakespeare 60

Support a charity and sing to an audience

Golden Themes

Voice and Influence: How to take part in making and changing rules in own class / school • Uneven sharing of power and how some people are excluded from decision- making
Human Rights: The need to respect the rights of others

Weekly PE days: 1H Tuesday and Thursday | 1W Wednesday and Friday | 1B Tuesday and Wednesday

KEY DATES:

Y1 Meet the Teacher 5th September 8:50am

Parent Voice Wednesday 17th September | School closed for a training day 6th October |

Harvest Festival Monday 13th October | Shine a Light day 17th October

ATTENDANCE



NEVER ABSENT

NEVER LATE

- ⌚ School starts at **8:45**
- ✓ It is illegal for your child to be absent from school without authorisation
- ✓ High attendance in school gets your child's life off to a flying start!
- ✓ To report an absence please contact us on the number below:
☎ 01135351000
✉ office@shakespeareleeds.org.uk

WE ARE READING:



To read about the Year 1 curriculum in more detail please visit our school website

**SHAKESPEARE
PRIMARY SCHOOL**

A curriculum of excellence
from the heart of Leeds

www.shakespeareleeds.org.uk

