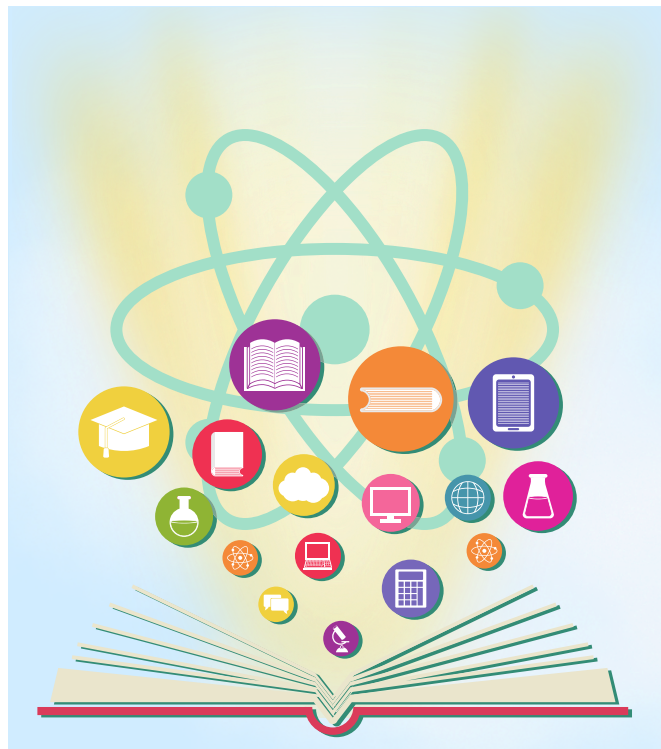


Full of Learning Power



How can our decisions and actions have a positive impact on the world?



Project Questions

How do scientists draw circuits?
How can a circuit be changed?
Why is a lamp brighter in a circuit with two batteries than with one?
How will increasing the voltage in a circuit affect the components?

Visits and Visitors

Visit to Leeds Art Gallery

Shakespeare 60

Visit an art gallery

Golden Themes

Peace and Conflict:

- wider causes and effects of conflict at all levels
- importance of resolving conflict fairly
- role of non-violent protest in social and political change

KEY DATES:

Monday 12th January- Home Learning meeting for parents 3pm |

Wednesday 21st January- Parent Voice 9am | Wednesday 28th January- Art gallery and street art walk | Wednesday 11th

February- Parent Online Safety Workshop 2pm

| Friday 13th February- School is **closed** for a training day and holidays, we will open again on Monday 23rd February

ATTENDANCE



NEVER ABSENT
NEVER LATE

✓ To report an absence please contact us on the number below:

☎ 01135351000

✉ office@shakespeareleeds.org.uk

✓ Well done to all the children who had 100% attendance last half term! This is a brilliant achievement.

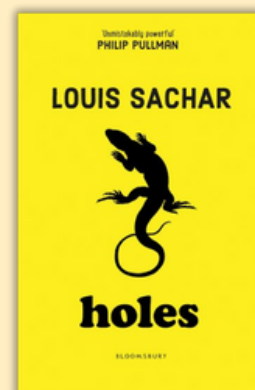
✓ Please continue to support us in helping your child reach their full potential by ensuring they attend school **every** day.

✓ We will be monitoring attendance closely over the next half term. Please contact us if you need support.

✓ Whole school attendance so far this academic year is 96%. During last half term alone, attendance was 96.2%

✓ Attendance in Year 6 last half term was **95.9%**. This is below the rest of the school. Please ensure your child attends school every day this half term.

WE ARE READING:



To read about the Year Six curriculum in more detail please visit our school website

**SHAKESPEARE
PRIMARY SCHOOL**

A curriculum of excellence
from the heart of Leeds

www.shakespeareleeds.org.uk

