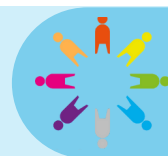


Ocean Life



How do humans impact marine environments locally and around the world?



Project Questions

How are living things grouped?
What is a classification key?
How does a food chain work?
How do human actions impact the environment?

Visits and Visitors

Virtual reality underwater experience

Shakespeare 60

Run 1 mile, count to 20 in a foreign language, learn to swim

Golden Themes

Peace and Conflict:

- some causes and effects of conflict at all levels from personal to global
- strategies for managing, resolving and preventing conflict, including 'win-win' solutions
- examples of conflicts past and present in own society and others

KEY DATES:

Tuesday 13th January- Under the Sea VR experience |

Wednesday 21st January- Parent Voice 9am | Wednesday 11th February- Parent Online Safety Workshop 2pm

| Friday 13th February- School is **closed** for a training day and holidays, we will open again on Monday 23rd February

ATTENDANCE



NEVER ABSENT
NEVER LATE

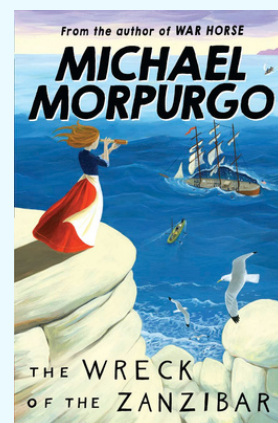
☑ To report an absence please contact us on the number below:

☎ 01135351000

✉ office@shakespeareleeds.org.uk

- ☑ Well done to all the children who had 100% attendance last half term! This is a brilliant achievement.
- ☑ Please continue to support us in helping your child reach their full potential by ensuring they attend school **every** day.
- ☑ We will be monitoring attendance closely over the next half term. Please contact us if you need support.
- ☑ Whole school attendance so far this academic year is 96%. During last half term alone, attendance was 96.2%
- ☑ Attendance in Year 4 last half term was **97.7%**. This is higher the rest of the school. Please continue what you are doing to ensure your child comes to school every day.

WE ARE READING:



To read about the Year Four curriculum in more detail please visit our school website

**SHAKESPEARE
PRIMARY SCHOOL**

A curriculum of excellence
from the heart of Leeds

www.shakespeareleeds.org.uk

