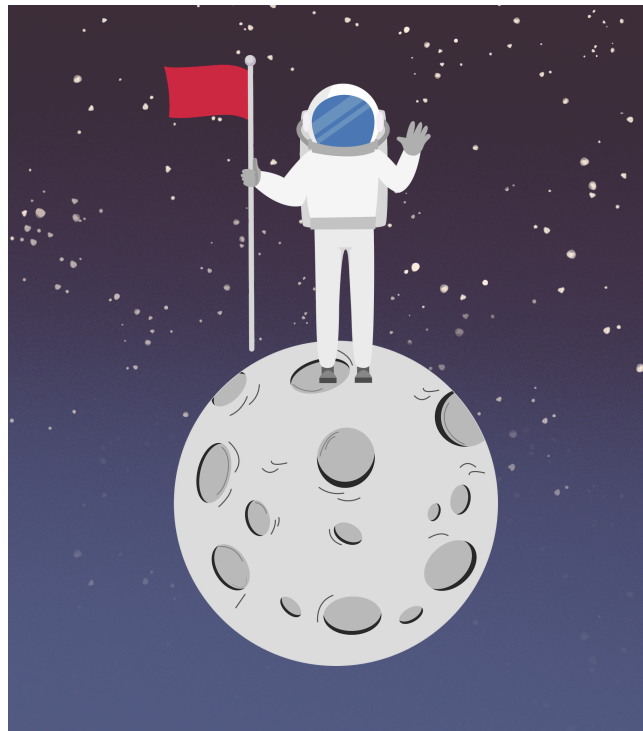


Space Race



Who and what has moved on the moon?



Project Questions

Who were the women that helped during the space race?
Why is Neil Armstrong significant?
How do we know Neil Armstrong went to the Moon?
Which countries were in the space race?
When did Neil Armstrong travel to the Moon?

Visits and Visitors

- Visit from author Kate Pankhurst
- Year 5 'astronomists' visit the Year 1 classrooms to answer questions about space

Shakespeare 60

Meet an author, learn to tie shoelaces

Golden Themes

Peace and Conflict:

- causes of disagreement and conflict at personal, classroom and household levels
- some ways of avoiding, managing and resolving conflict

KEY DATES:

Thursday 15th January- Author Kate Pankhurst visit |

Wednesday 21st January- Parent Voice 9am | Wednesday 11th February- Parent Online Safety Workshop 2pm

| Friday 13th February- School is **closed** for a training day and holidays, we will open again on Monday 23rd February

ATTENDANCE



NEVER ABSENT
NEVER LATE

✓ To report an absence please contact us on the number below:

☎ 01135351000

✉ office@shakespeareleeds.org.uk

✓ Well done to all the children who had 100% attendance last half term! This is a brilliant achievement.

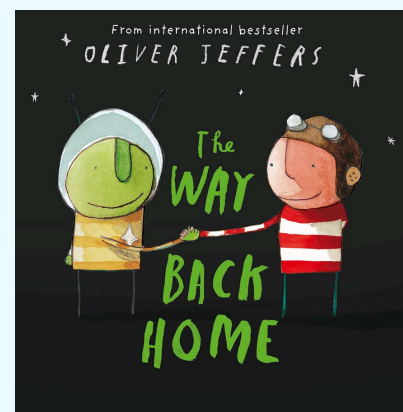
✓ Please continue to support us in helping your child reach their full potential by ensuring they attend school **every** day.

✓ We will be monitoring attendance closely over the next half term. Please contact us if you need support.

✓ Whole school attendance so far this academic year is 96%. During last half term alone, attendance was 96.2%

✓ Attendance in Year 1 last half term was **97.3!** This is much higher than the rest of school - well done. Please continue what you are doing to ensure your child comes to school every day.

WE ARE READING:



To read about the Year One curriculum in more detail please visit our school website

**SHAKESPEARE
PRIMARY SCHOOL**

A curriculum of excellence
from the heart of Leeds

www.shakespeareleeds.org.uk

